

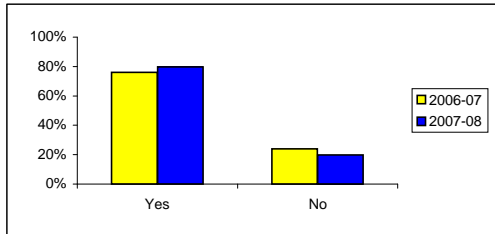
Student Feedback: School/College Partnership
Cross-College Comparison 2006/07 - 2007/08

This session's results are based on 328 responses representing 48% of enrolments at November 2007 for courses taught in six departments on all three campuses.

Before starting college:

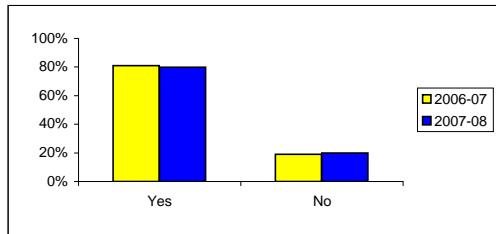
Did you receive enough information about the College?

Session	Yes	No
2006-07	76%	24%
2007-08	80%	20%



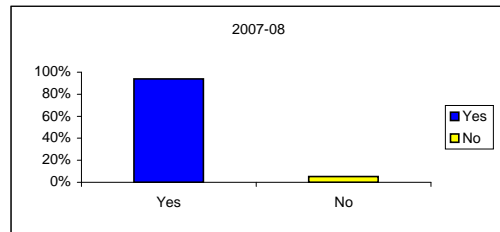
Was the information about the subject you are studying helpful?

Session	Yes	No
2006-07	81%	19%
2007-08	80%	20%



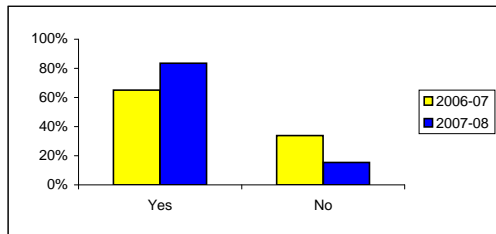
Did the range of programmes appeal to you?

Session	Yes	No
2007-08	94%	5%



Do you think that you were well prepared for coming to College?

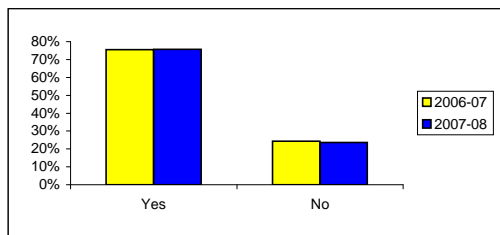
Session	Yes	No
2006-07	65%	34%
2007-08	84%	15%



When you started college:

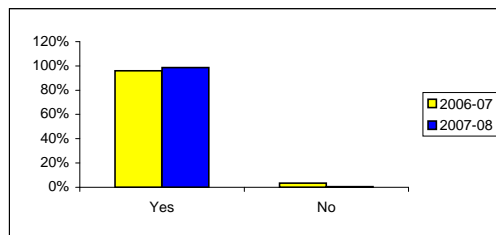
Were you given clear instructions on where to go on your first day?

Session	Yes	No
2006-07	75%	24%
2007-08	76%	24%



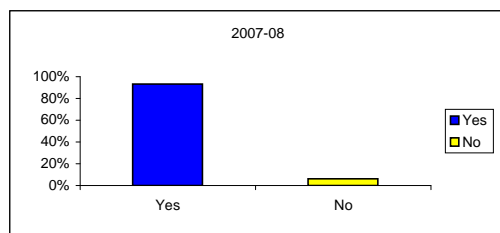
Have staff been helpful?

Session	Yes	No
2006-07	96%	4%
2007-08	99%	1%



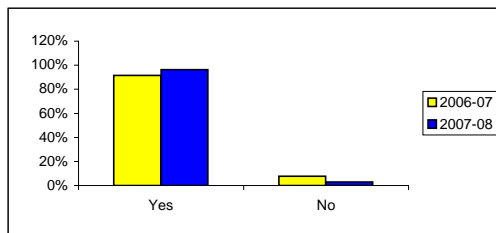
Did you have a good introduction to your College course?

Session	Yes	No
2007-08	93%	6%



Would you recommend coming to College to other school pupils?

Session	Yes	No
2006-07	92%	8%
2007-08	96%	3%

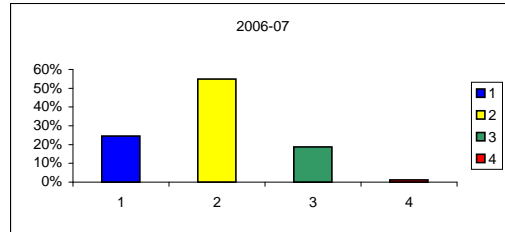
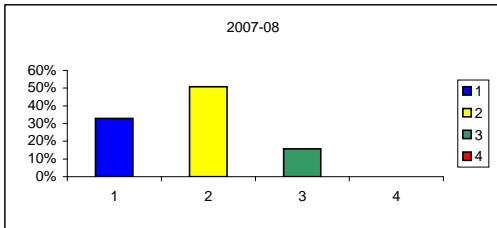


Student Feedback: School/College Partnership
Cross-College Comparison 2006/07 - 2007/08

In class

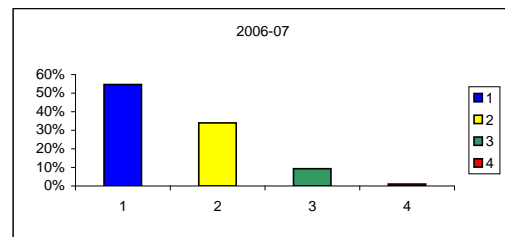
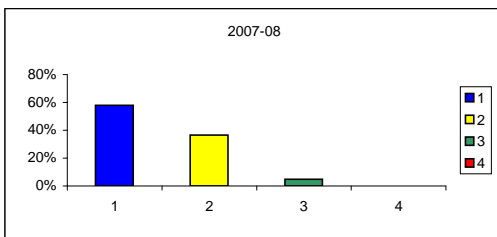
Do you find your class interesting?

Session	1. Always	2. Usually	3. Sometimes	4. Never
2006-07	25%	55%	19%	1%
2007-08	33%	51%	16%	0%



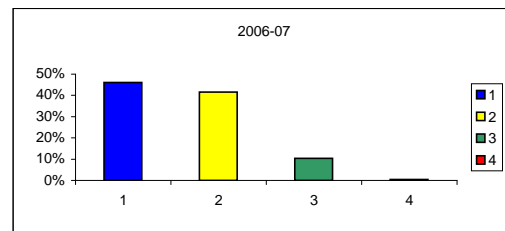
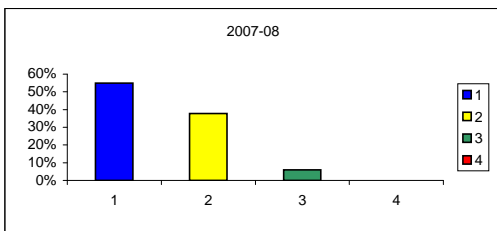
Are you encouraged to learn in class?

Session	1. Always	2. Usually	3. Sometimes	4. Never
2006-07	55%	34%	9%	1%
2007-08	58%	37%	5%	0%



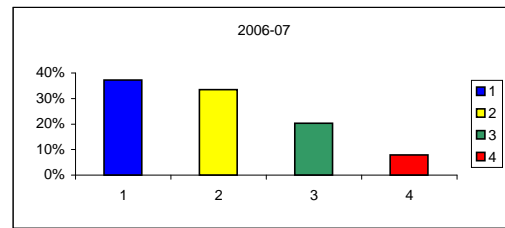
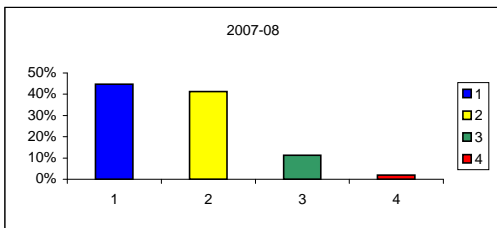
Is the amount of work covered in classes about right?

Session	1. Always	2. Usually	3. Sometimes	4. Never
2006-07	46%	42%	10%	1%
2007-08	55%	38%	6%	0%



Are you encouraged to review your work?

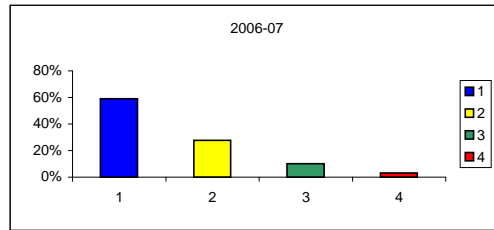
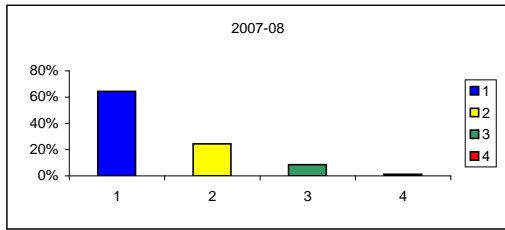
Session	1. Always	2. Usually	3. Sometimes	4. Never
2006-07	37%	33%	20%	8%
2007-08	45%	41%	11%	2%



Student Feedback: School/College Partnership
Cross-College Comparison 2006/07 - 2007/08

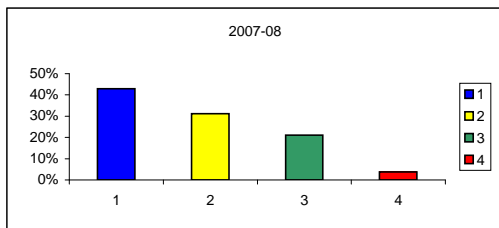
Do you receive individual help when required?

Session	1. Always	2. Usually	3. Sometimes	4. Never
2006-07	59%	28%	10%	3%
2007-08	64%	24%	9%	1%



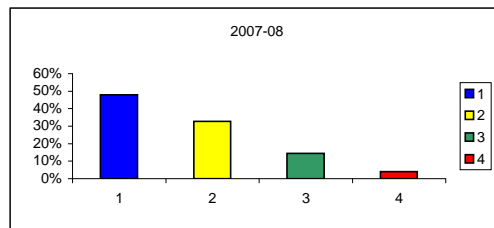
Are you told how you are progressing?

Session	1. Always	2. Usually	3. Sometimes	4. Never
2007-08	43%	31%	21%	4%



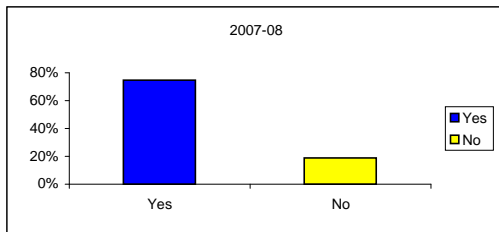
Are you told what you have achieved?

Session	1. Always	2. Usually	3. Sometimes	4. Never
2007-08	48%	33%	15%	4%



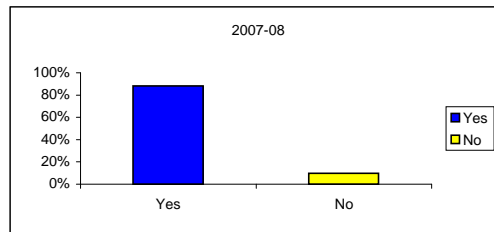
Is your learning experience at College better than at school?

Session	Yes	No
2007-08	75%	19%



Are you encouraged to find out things for yourself about the subject?

Session	Yes	No
2007-08	88%	10%



Do you know support is available from the Youth Learning Development Worker?

Session	Yes	No
2007-08	49%	49%

